

SACOG Megaregion Priorities

Megaregion Working Group, June 25, 2021

Four projects and one feasibility study





Sacramento Interregional Travel Patterns

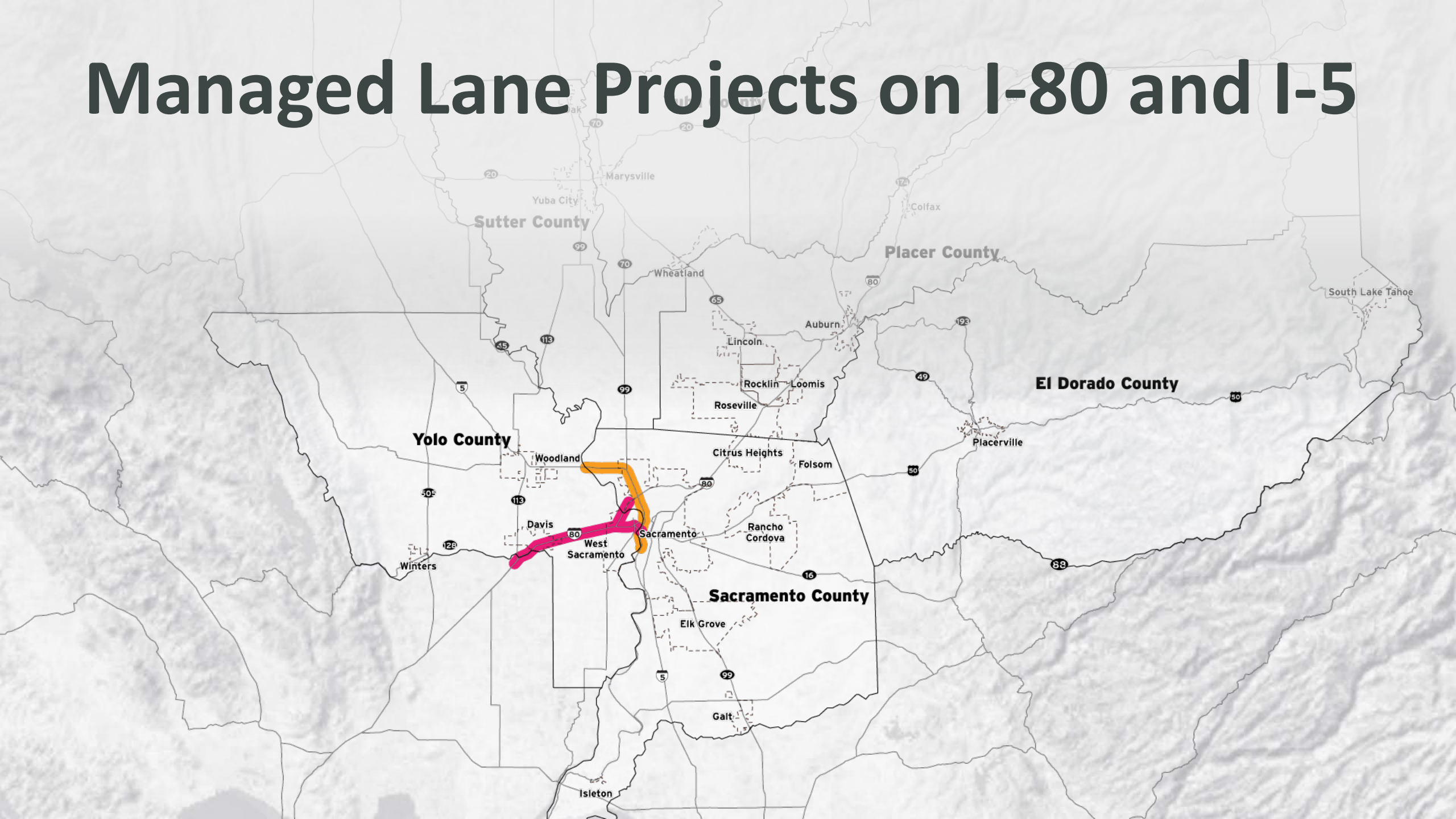
55% of our region's interregional travel happens at three gateways

- WB I-80 to the Bay Area,
- SB SR 99 south to San Joaquin
- SB I-5 to San Joaquin

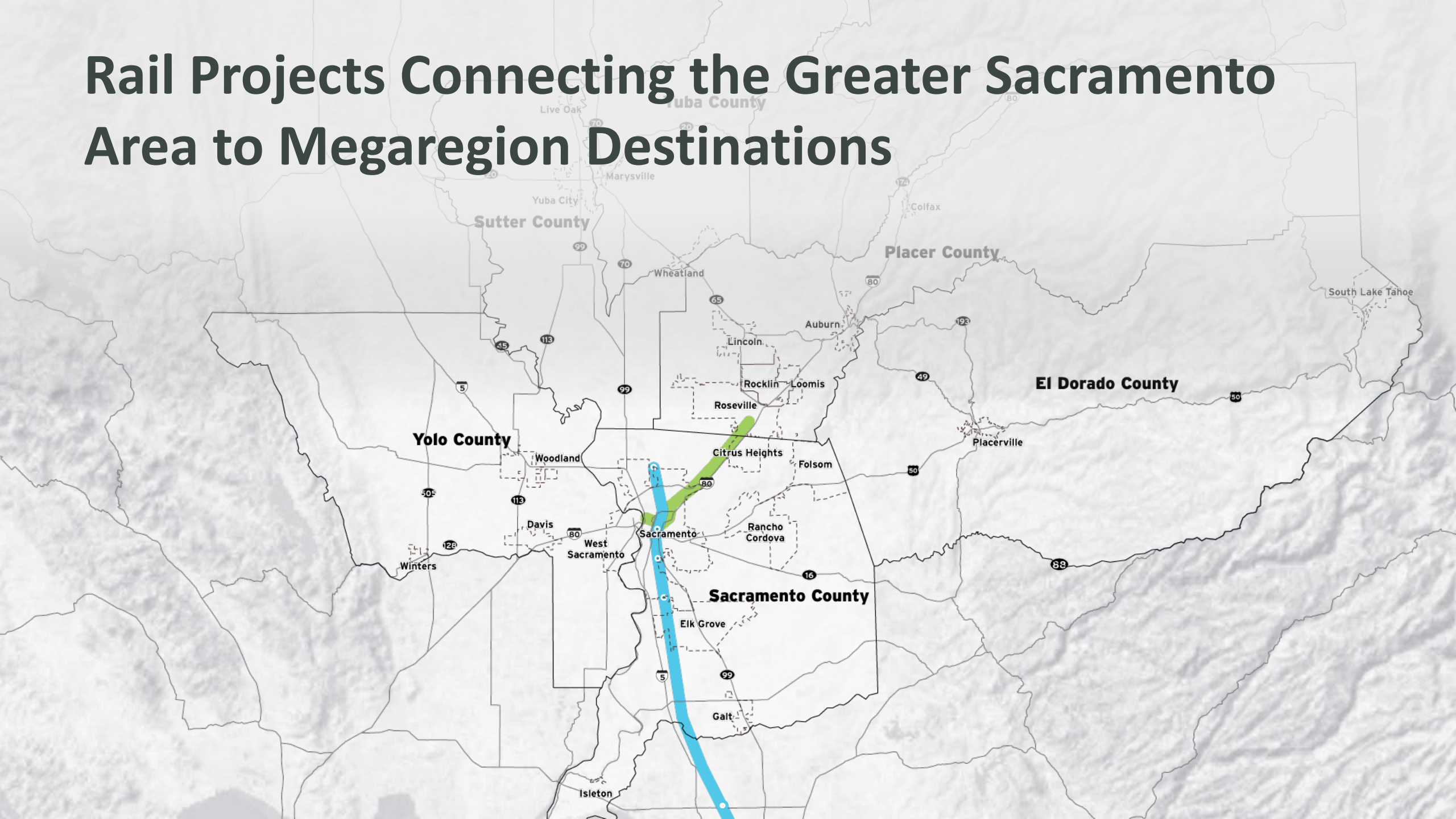
Where do trips end in either the Bay Area or San Joaquin?

- 39% of trips on I-80 in Yolo County
- 12% of Business 80 trips in Sacramento
- 32% of SR 99 trips south of Elk Grove
- 43% of I-5 trips south of Elk Grove

Managed Lane Projects on I-80 and I-5



Rail Projects Connecting the Greater Sacramento Area to Megaregion Destinations



Electric Freight Supportive Infrastructure Study

