

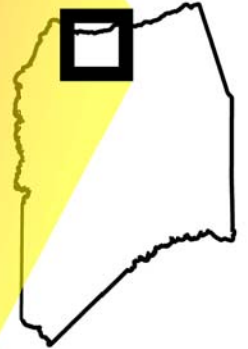
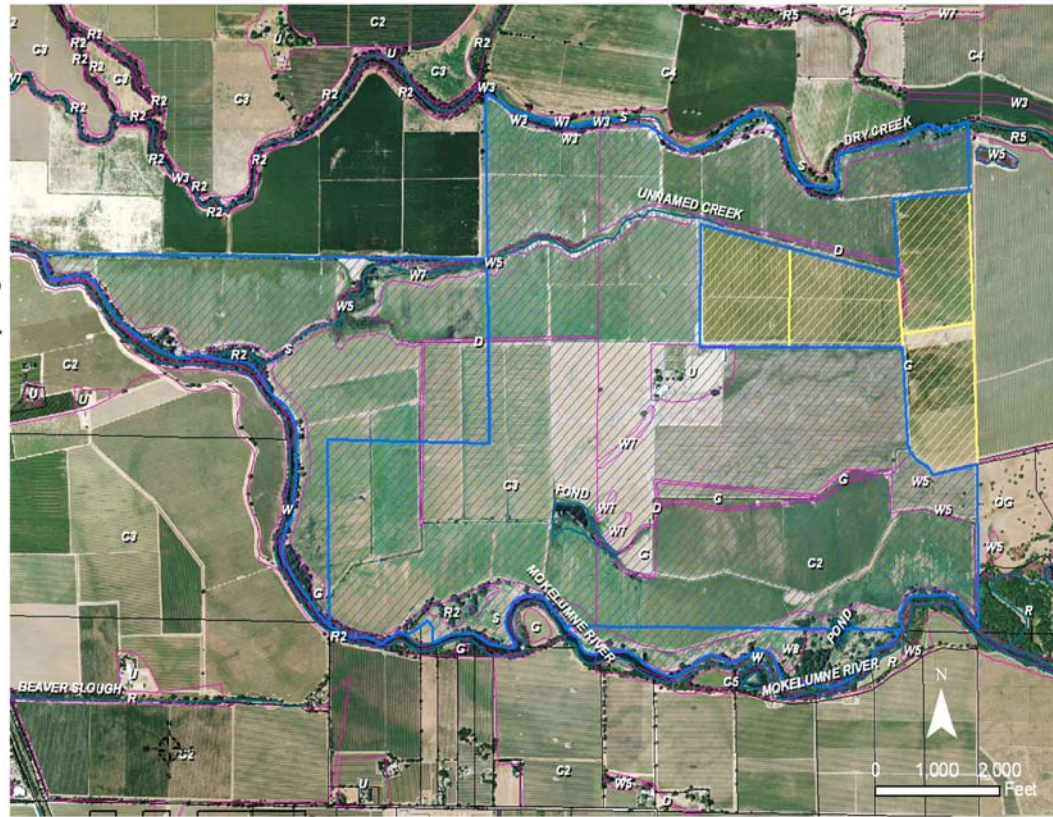
The Hilder Preserve

The Hilder Preserve, located in the Central Zone northwest of the City of Lodi adjacent to the Beck Preserve, bordering Dry Creek and the Mokelumne River between Lower Sacramento Road (east) and I-5 (west) at the end of Forrest Lake Road, is comprised of a multitude of habitats for species. In 2007 and 2008, the SJCOC, Inc. Board approved the easement on this 1,282 acre property to serve as mitigation for the consumption of Row and Field Crop and Grassland habitat in the Central Zone. The Property will serve as foraging and nesting habitat for SJMSCP covered species.

Legend

-  Hilder Preserve
-  Beck Preserve
-  Habitat Map
-  Water
-  County Parcels

- D: Ditch
- C4: Row and Field Crop
- G: Grasslands
- U: Urban
- R5: Great Valley Mixed Riparian Forest
- S: Great Valley Riparian Scrub
- W3: Creek
- W5: Freshwater Pond/Lake



SAN JOAQUIN COUNTY
MULTI-SPECIES HABITAT
CONSERVATION AND OPEN SPACE PLAN

SJCOC, Inc.
555 E. WEBER AVENUE
STOCKTON, CA 95202
(209) 468-3913
(209) 468-1084 fax
www.sjcog.org/habitat

