

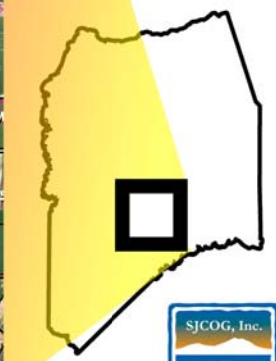
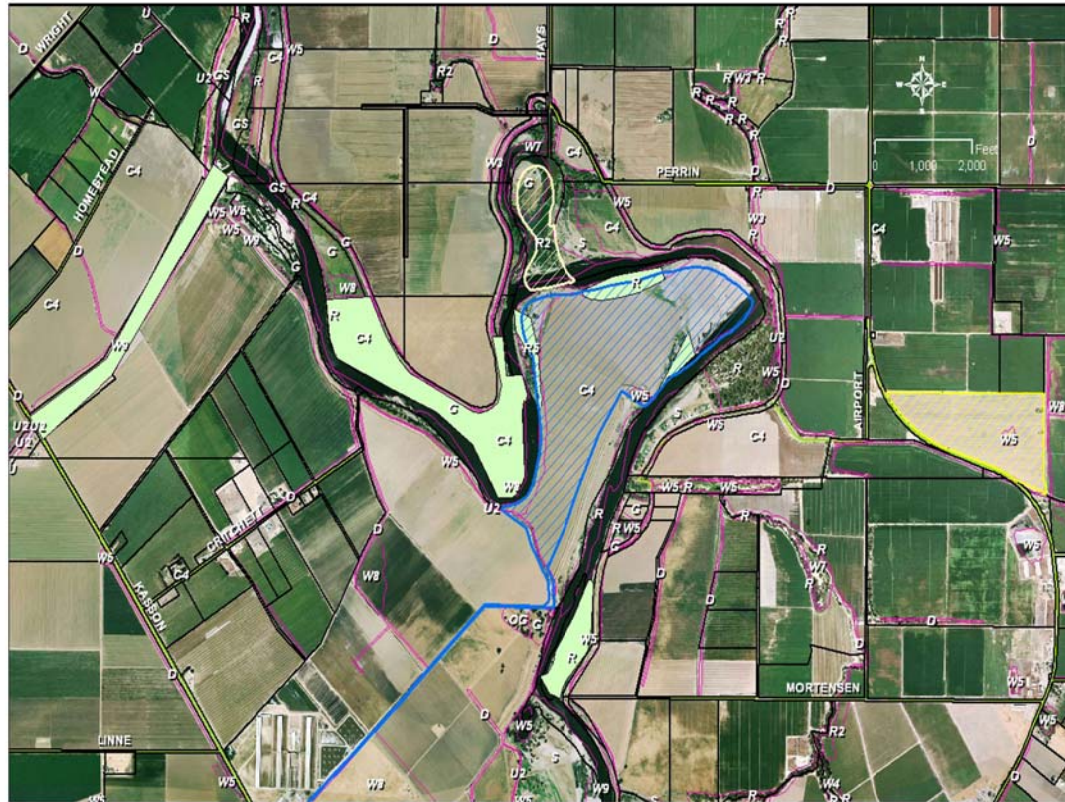
# The Alegre Preserve

The Alegre Preserves, totaling 180 acres, is a Central Zone Row and Field Crop Preserve located south of the City of Manteca near other SJMSCP preserves along the San Joaquin River. In 2008, SJCOG Inc. approved the acquisition of this property to serve as the mitigation for the consumption of land in the Central Zone. Protected species include Swainson's hawk, Northern harrier, White-tailed kite, Merlin, Great egret and Blue Heron.

## LEGEND

-  Seegers Preserve
-  Alegre Preserve
-  Cabral Island Preserve
-  DFG or Other Easements
-  Habitat Map
-  Streets Highways

- C4: Row and Field Crop
- D: Ditch
- G: Grasslands
- R: Great Valley Riparian Forest
- U/U2: Urban/Scraped Paved
- W3: Creek (20-100 feet wide)
- W5: Freshwater Lake, Pond or Vernal Pool
- W7: Freshwater Emergent Wetland
- W8: Vernal or Seasonal Wetland



SAN JOAQUIN COUNTY  
MULTI-SPECIES HABITAT  
CONSERVATION AND OPEN SPACE PLAN

SJCOG, Inc.  
555 E. WEBER AVENUE  
STOCKTON, CA 95202  
(209) 468-3913  
(209) 468-1084 fax  
[www.sjcog.org/habitat](http://www.sjcog.org/habitat)

